



MASTER FLOW DYNAMICS

ENERGY SOLUTIONS

CATALOGUE 2024

MASTER

FLOW **D**YNAMICS

E N E R G Y S O L U T I O N S



TABLE OF CONTENTS



TITLE PAGE	01
TABLE OF CONTENTS	03
ABOUT US	04
FLARE FITTINGS	05
HEXAGONAL NUTS	06
BALL VALVES	07
CYLINDER MANIFOLD	07
DISTRIBUTION MANIFOLD	08
PLUGS	08
PRESSURE GAUGE	09
HOSE NIPPLES	10
LIQUID TEFLON	10
BRASS FITTINGS	11
HOSE CLAMPS & SPANNER	12
FLEXIBLE HOSE	12
CONTACT INFORMATION	13



ABOUT US

Your Trusted Partner in Steel and Brass Gas and LPG Components!

As a sister company of **Chehab Gaz** and based in Beirut, Lebanon, we specialize in designing and manufacturing quality parts and accessories for your gas and LPG needs.

Certificate of Conformity



CERTIFICATE OF CONFORMITY

Certificate No.: ZTS24102914OCD

Applicant.....: Chehab Gaz s.a.r.l
 Chehab building-Riyad street-Sakiyat al janzeer-Beirut-Lebanon

Manufacturer.....: Chehab Gaz s.a.r.l
 Chehab building-Riyad street-Sakiyat al janzeer-Beirut-Lebanon

Product.....: DISTRIBUTING STEEL PIPE
 Trade Name.....: MFD
 Model(s).....: DST-02-OP, CTRL-03-HD, DST-01-OP, DST-03-OP, DST-04-OP,
 DST-05-OP, DST-06-OP, DST-07-OP, CTRL-01-HD, CTRL-02-HD,
 CTRL-04-HD, CTRL-05-HD, CTRL-06-HD, CTRL-07-HD

Requirement	Applied Standards	Document Evidence	Result
MD Directive	EN ISO 12100: 2010	ZTS24102914OCD	Conform

The EUT described above has been tested by us with the listed standards and found in compliance with the council, MD Directive 2006/42/EC, so ZTS Testing hereby acknowledges that the Manufacturer may issue a COC apply the CE marking in accordance with European Union Rules

This certificate of conformity is based on a single evaluation of the submitted sample(s) of the above mentioned product. It does not imply an assessment of the whole production and other relevant directives have to be observed



Bert Yang
 Bert Yang/Senior Manager
 Nov. 01, 2024



Shenzhen ZTS Testing Service Co., Ltd.

808, Building 1, 7th Industrial Zone, Yulu Community, Yutang Street, Guangming District, Shenzhen, Guangdong, China
 Website: zts-test.com Tel: 400-8788-298 Tel: 0755-23245357

FLARE FITTINGS



ITEM	CODE
FLARE CONECTION 1/4 THREAD X 1/2 PIPE	MFD.01.01
FLARE CONECTION 3/8 THREAD X 1/2 PIPE	MFD.01.02
FLARE CONECTION 1/2 THREAD X 1/2 PIPE	MFD.01.03
FLARE CONECTION HOSE X 1/2 PIPE	MFD.01.04
FLARE CONECTION 1/2 PIPE X 1/2 PIPE	MFD.01.05
FLARE NUT 1/2 PIPE	MFD.01.06

ITEM	CODE
FLARE CONECTION 1/4 THREAD X 3/8 PIPE	MFD.02.01
FLARE CONECTION 3/8 THREAD X 3/8 PIPE	MFD.02.02
FLARE CONECTION 1/2 THREAD X 3/8 PIPE	MFD.02.03
FLARE CONECTION HOSE X 3/8 PIPE	MFD.02.04
FLARE NUT 3/8 PIPE	MFD.02.05

HEXAGONAL NUTS



ITEM	CODE
CH 27 FEMALE IRON NUT (SHELL)	MFD.03.01
CH 25 FEMALE IRON NUT (AJP)	MFD.03.02
BR 20MM FEMALE NUT BRASS) FRENCH)	MFD.03.03
REGULATOR SHAFT COPPER	MFD.03.04
REGULATOR SHAFT IRON	MFD.03.05

BALL VALVES



ITEM	CODE
YELLOW VALVE WITH BASE FEMALE X FEMALE	MFD.04.01
YELLOW VALVE WITH BASE FEMALE X MALE	MFD.04.02

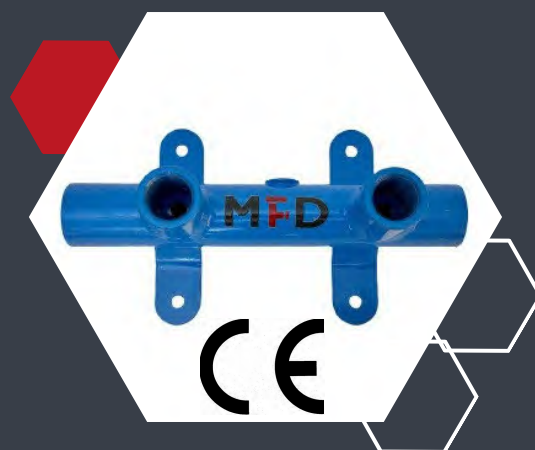
CYLINDER MANIFOLD

INCLUDING FLEXIBLE HOSE 50CM



ITEM	(VALVE SIZE: LH 21.8X14)	CODE
MANIFOLD 2 CYLINDERS FIXED LEGS		MFD.05.01
MANIFOLD 2 CYLINDERS MOVABLE LEGS		MFD.05.02
MANIFOLD 3 CYLINDERS FIXED LEGS		MFD.05.03
MANIFOLD 3 CYLINDERS MOVABLE LEGS		MFD.05.04
MANIFOLD 4 CYLINDERS FIXED LEGS		MFD.05.05
MANIFOLD 4 CYLINDERS MOVABLE LEGS		MFD.05.06

DISTRIBUTION MANIFOLD



ITEM	CODE
INTERNAL 2 OUTLETS OPENED BOTH SIDES + MANOMETER OPENING	MFD.06.01.OP
INTERNAL 3 OUTLETS OPENED BOTH SIDES + MANOMETER OPENING	MFD.06.02.OP
INTERNAL 4 OUTLETS OPENED BOTH SIDES + MANOMETER OPENING	MFD.06.03.OP
INTERNAL 5 OUTLETS OPENED BOTH SIDES + MANOMETER OPENING	MFD.06.04.OP

PLUGS



ITEM	CODE
1/4 COPPER PLUG MALE	MFD.07.01
1/2 COPPER PLUG MALE	MFD.07.02
3/4 COPPER PLUG MALE	MFD.07.03

PRESSURE GAUGE



CE



ITEM		CODE
PRESSURE GAUGE 1 BAR	THREAD SIZE 1/4 INCH	MFD.08.01
PRESSURE GAUGE 6 BAR	THREAD SIZE 1/4 INCH	MFD.08.02
PRESSURE GAUGE 20 BAR	THREAD SIZE 1/4 INCH	MED.08.03
PRESSURE RELIEF VALVE 18 BAR	THREAD SIZE 1/4 INCH	MFD.08.04

HOSE NIPPLES



ITEM	CODE
HOSE NIPPLE 3/8 MALE IRON	MFD.10.01
HOSE NIPPLE 1/2 MALE COPPER	MFD.10.02
HOSE NIPPLE SHORT	MFD.10.03
HOSE NIPPLE 1/4 MALE COPPER	MFD.10.04
HOSE NIPPLE 1/2 FEMALE COPPER	MFD.10.05

LIQUID TEFLON



ITEM	CODE
BLUE LIQUID TEFLON 50 ML	MFD.55.43
RED LIQUID TEFLON 50 ML	MFD.55.52

BRASS FITTINGS



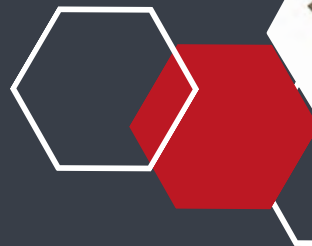
	ITEM	CODE
1	MALE 1/2 X FEMALE 20MM	MFD.13.01
2	BRAZING 12MM X FEMALE 1/2 INCH ELBOW	MFD.13.02
3	TANK VALVE NOZZLE	MFD.13.03
4	MALE CH 27L X MALE 1/2 INCH	MFD.13.04
5	MALE 20MM X MALE 1/2 INCH	MFD.13.05
6	BRAZING 15MM X 1/2 INCH X 15MM BRAZING	MFD.13.06

HOSE CLAMPS & SPANNER



ITEM	CODE
HOSE CLAMP 10-16MM	MFD.12.01
SPANNER 28 X 25	MFD.12.02
SPANNER 27x24	MFD.12.03

FLEXIBLE HOSE



ITEM	CODE
Flexible hose 27CH x 27CH 50 cm	MFD. 11.01
Flexible hose 27CH x 25CH 50 cm	MFD. 11.02
Flexible hose 27CH x 27CH 70 cm	MFD.11.03
Flexible hose 27CH x 25CH 70 cm	MFD.11.04
Flexible hose 27CH x 27CH 100 cm	MFD.11.05
Flexible hose 27CH x 25CH 100 cm	MFD.11.06

CONTACT US



Verdun
Beirut, Lebanon



WhatsApp: +961 70 693 841



[masterflowdynamics.com](https://www.masterflowdynamics.com)



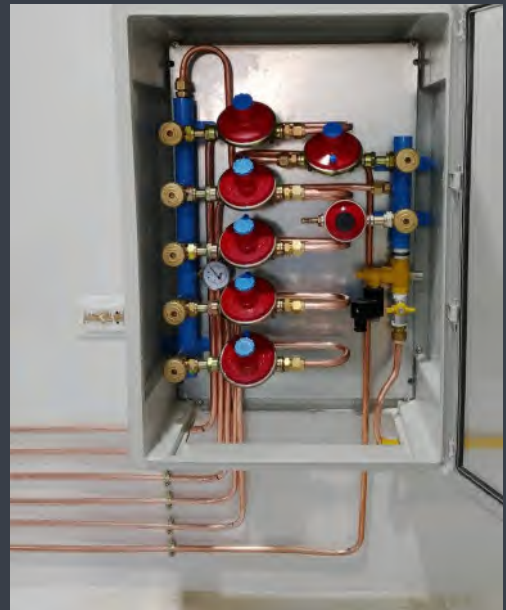
info@masterflowdynamics.com



WORLDWIDE SHIPPING



MASTER
FLOW DYNAMICS
ENERGY SOLUTIONS



WWW.MASTERFLOWDYNAMICS.COM

